



# Wound Bed Preparation Pathway


Wound Bed Preparation promotes wound healing<sup>1</sup>. Over 90% of chronic wounds contain a biofilm<sup>2</sup>, consensus recommends that all open wounds should be treated as containing biofilm<sup>1</sup>. Devitalised tissue (slough and necrosis) are frequently present in chronic wounds and are associated with the presence of biofilm<sup>3</sup>. Outcomes indicating wound bed preparation progression reduce slough<sup>4</sup>, exudate<sup>4</sup> and infections<sup>5</sup>.



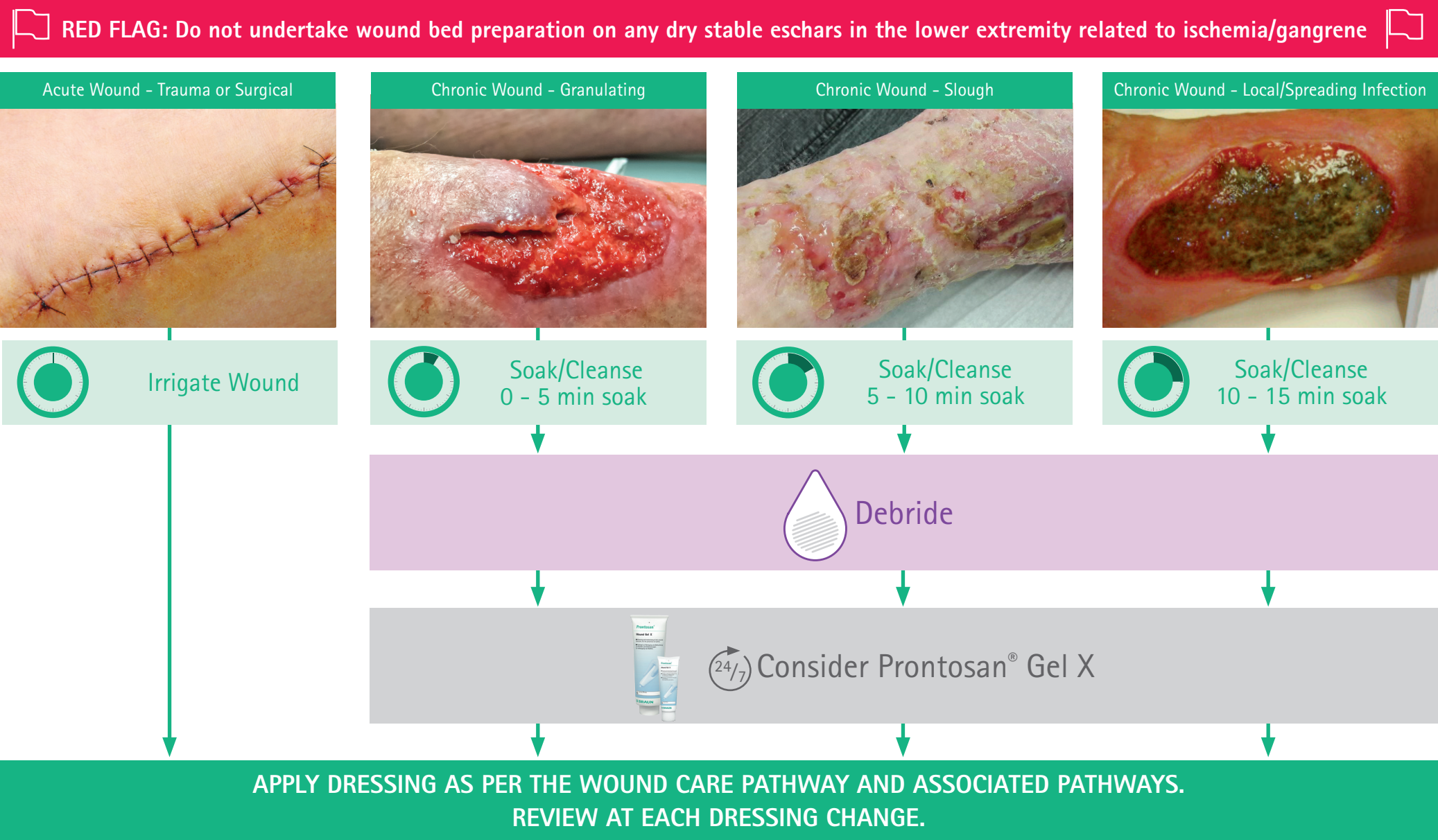
**CLEANSE - Prontosan Solution**  
TREATMENT OBJECTIVES:  
Remove debris. Disrupt biofilm. Prepare for debridement.



**DEBRIDE**  
TREATMENT OBJECTIVES:  
Remove biofilm and to lift and remove debris and slough.



**PREVENT - Prontosan Gel X**  
TREATMENT OBJECTIVES:  
Prevent biofilm reformation. Minimise complications. Continued cleansing effect.



If the named product on this pathway is not available, a temporary second line product is available to use. This can be found within the main text of the Doncaster Wide Wound Care Formulary Document. Developed by the Skin Integrity Team 2017, reviewed March 2024 as part of the Doncaster Wound Care Alliance in partnership with B. Braun Medical Ltd. Version 4. For review July 2027.

Please refer to the instructions for use for all products for contraindications.

B. Braun Medical Ltd | Thorncliffe Park | Sheffield | S35 2PW  
Tel 0114 225 9000 | Fax 0114 255 9111 | [www.bbraun.co.uk](http://www.bbraun.co.uk)

XX-PMPDEWMA-08-24

References:

1. Murphy C, Atkin L, Dissemond J, Hurlow J, Tan YK, Apelqvist J, James G, Salles N, Wu J, Tachi M, Wolcott R. Defying hard-to-heal wounds with an early antibiofilm intervention strategy: 'wound hygiene'. J Wound Care. 2019 Dec 2;28(12):818-822.  
2. Attinger C, Wolcott R. Clinically Addressing Biofilm in Chronic Wounds. Adv Wound Care (New Rochelle). 2012 Jun;1(3):127-132.  
3. Percival SL, Suleman L (2015) Slough and biofilm: removal of barriers to wound healing by desloughing. J Wound Care 24(11):498-510.  
4. Valenzuela A, Perucho N. Effectiveness of a 0.1% polyhexanide gel. Rev ROL Enf 2008; 31(4):247-252  
5. Vernon T, Moore K, Collier M. Development and integration of a wound cleansing pathway into clinical practice. Br J Nurs. 2021 Nov 2;30(Sup20):S18-S26. doi: 10.12968/bjon.2021.30.Sup20.S18. PMID: 34781765.

# Wound Bed Preparation Pathway

Wound Bed Preparation promotes wound healing<sup>1</sup>. Over 90% of chronic wounds contain a biofilm<sup>2</sup>, consensus recommends that all open wounds should be treated as containing biofilm<sup>1</sup>. Devitalised tissue (slough and necrosis) are frequently present in chronic wounds and are associated with the presence of biofilm<sup>3</sup>. Outcomes indicating wound bed preparation progression reduce slough<sup>4</sup>, exudate<sup>4</sup> and infections<sup>5</sup>.



## CLEANSE - Prontosan Solution

TREATMENT OBJECTIVES:  
Remove debris. Disrupt biofilm. Prepare for debridement.



## DEBRIDE

TREATMENT OBJECTIVES:  
Remove biofilm and to lift and remove debris and slough.



## PREVENT - Prontosan Gel X

TREATMENT OBJECTIVES:  
Prevent biofilm reformation. Minimise complications.  
Continued cleansing effect.

| Product Description        | Size          | Product Code |
|----------------------------|---------------|--------------|
| Prontosan® Solution        | 40 ml ampoule | 400484       |
|                            | 350 ml bottle | 400403       |
| Prontosan® Debridement Pad | Pack of 3     | 3908456      |
|                            | Pack of 10    | 3908457      |
| Prontosan® Gel X           | 50 g tube     | 400517       |
|                            | 250 g tube    | 400508       |

Please refer to the instructions for use for all products for contraindications

B. Braun Medical Ltd | Thorncliffe Park | Sheffield | S35 2PW  
Tel 0114 225 9000 | Fax 0114 255 9111 | [www.bbraun.co.uk](http://www.bbraun.co.uk)



**RED FLAG: Do not undertake wound bed preparation on any dry stable eschars in the lower extremity related to ischemia/gangrene**



Acute Wound - Trauma or Surgical



Irrigate Wound

Chronic Wound - Granulating



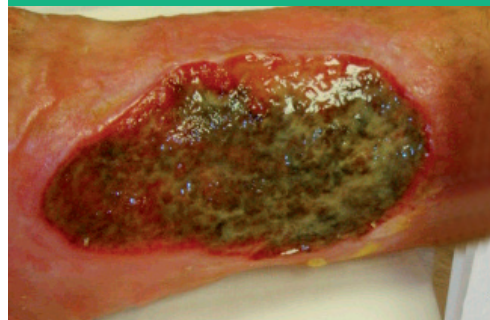
Soak/Cleanse  
0 - 5 min soak

Chronic Wound - Slough



Soak/Cleanse  
5 - 10 min soak

Chronic Wound - Local/Spreading Infection



Soak/Cleanse  
10 - 15 min soak



Debride



Consider Prontosan® Gel X

**APPLY DRESSING AS PER THE WOUND CARE PATHWAY AND ASSOCIATED PATHWAYS.  
REVIEW AT EACH DRESSING CHANGE.**

If the named product on this pathway is not available, a temporary second line product is available to use. This can be found within the main text of the Doncaster Wide Wound Care Formulary Document.  
Developed by the Skin Integrity Team 2017, reviewed March 2024 as part of the Doncaster Wound Care Alliance in partnership with B. Braun Medical Ltd.  
Version 4. For review July 2027.

1. Murphy C, Atkin L, Dissemond J, Hurlow J, Tan YK, Apelqvist J, James G, Salles N, Wu J, Tachi M, Wolcott R. Defying hard-to-heal wounds with an early antibiofilm intervention strategy: 'wound hygiene'. J Wound Care. 2019 Dec 2;28(12):818-822.  
2. Attinger C, Wolcott R. Clinically Addressing Biofilm in Chronic Wounds. Adv Wound Care (New Rochelle). 2012 Jun;1(3):127-132.  
3. Percival SL, Suleman L (2015) Slough and biofilm: removal of barriers to wound healing by desloughing. J Wound Care 24(11):498-510.

4. Valenzuela A, Peruch N. Effectiveness of a 0.1% polyhexanide gel. Rev ROL Enf 2008; 31(4):247-252  
5. Vernon T, Moore K, Collier M. Development and integration of a wound cleansing pathway into clinical practice. Br J Nurs. 2021 Nov 2;30(Sup20):S18-S26. doi: 10.12968/bjon.2021.30.Sup20.S18. PMID: 34781765.