

# Minimum Data Set IAD

## ADMINISTRATIVE DATA

Date

Country

Setting  
 Teaching hospital  
 General hospital  
 Nursing home  
 Home care

Discipline (hospital only)

## PATIENT DATA

Year of birth

Gender  
 Female  
 Male

## INCONTINENCE

Urinary incontinence  
 Not incontinent  
 Occasionally incontinent  
 Frequently incontinent  
 Always incontinent

Faecal incontinence  
 Not incontinent  
 Occasionally incontinent  
 Frequently incontinent  
 Always incontinent

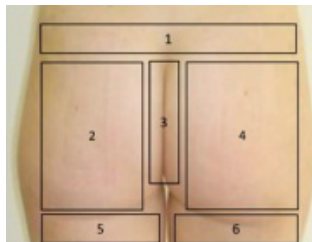
Diarrhoea  
 No  
 Yes  
Start date:  
Stop date:

## IAD CATEGORISATION

Do you observe IAD?  
 No  
 Yes

Facility acquired?  
 No  
 Yes

Location IAD



- 1
- 2
- 3
- 4
- 5
- 6

### Categorisation IAD according to GLOBIAD

- 1A Persistent redness without clinical signs of infection
- 1B Persistent redness with clinical signs of infection
- 2A Skin loss without clinical signs of infection
- 2B Skin loss with clinical signs of infection
- Infection confirmed by wound culture

## MANAGEMENT OF PERI-ANAL REGION

The skin is cleansed after an episode of incontinence with...

- Toilet paper
- Water and cleanser
- Water and oil
- No-rinse skin cleansers
- Cleansing foam
- Single-use disposable bathing wipes

After cleansing, do you use a leave-on product?

- Yes
- No

Do you use an anti-microbial agent?

- Yes
- Yes, on prescription
- No

Which incontinence products are used?

- Pads/briefs/liners
- Pull-up pants
- Underpants

Toileting programs

- Urine toileting program since:
- Bowel toileting program since: